

in pursuit of excellence in construction



Retrofit for the Future

Introduction by Roger Burton

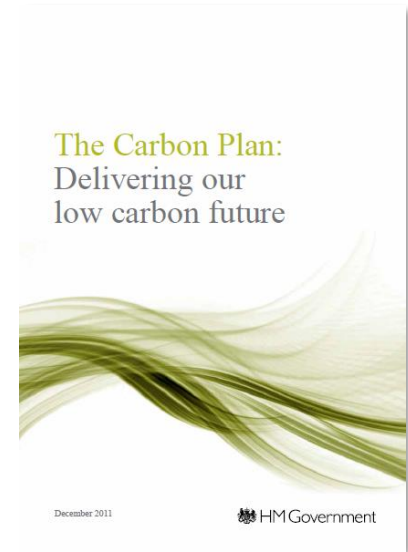
Chair CE Manchester.

RIBA Commissioner for Ethics and Sustainable Development

background

The Climate Change Act, passed in 2008, committed the UK to reducing greenhouse gas emissions in 2050 by at least 80% when compared with 1990 levels.

The Paris Agreement entered into force in the UK on 18th December 2016 and ‘requires all Parties to put forward their best efforts through “nationally determined contributions” (NDCs) and to strengthen these efforts in the years ahead.’



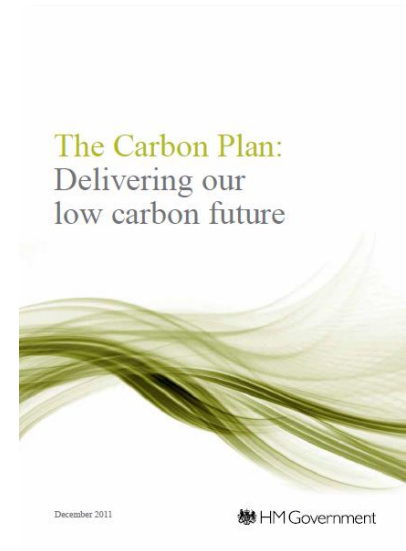
HM Government
December 2011

the UK scene

The UK Carbon Plan sets out how the UK will achieve decarbonisation within the framework of our energy policy: to make the transition to a low carbon economy through a series of Carbon Budgets.

Homes now account for 22% of UK Carbon emissions.* Clearly a major proportion of those emissions are from the existing stock and so should be a significant focus of our efforts to reduce carbon emissions to meet the Plan. The majority of that stock will still be in use in 2050

* includes electricity



HM Government
December 2011

the scale of demand

The Government's ambition is that all homes in the UK should be improved to an energy efficiency rating of C or better by 2035, affecting an estimated 9 million homes and equating to a delivery of 500,000 upgrades each year.

Furthermore, by 2050 'we will also likely need to fully decarbonise how we heat our homes' and this will require homes to be taken off the gas grid.

This implies a deeper retrofit.



White Paper reported to
Government October 2017

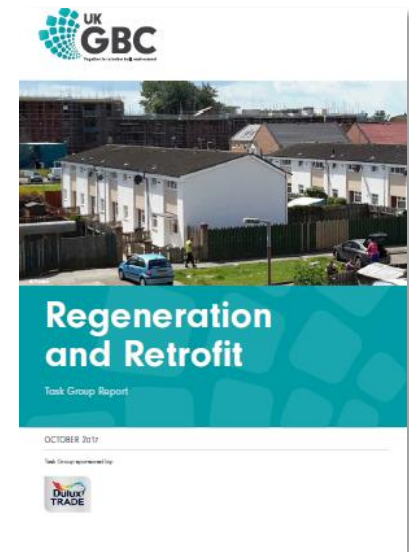
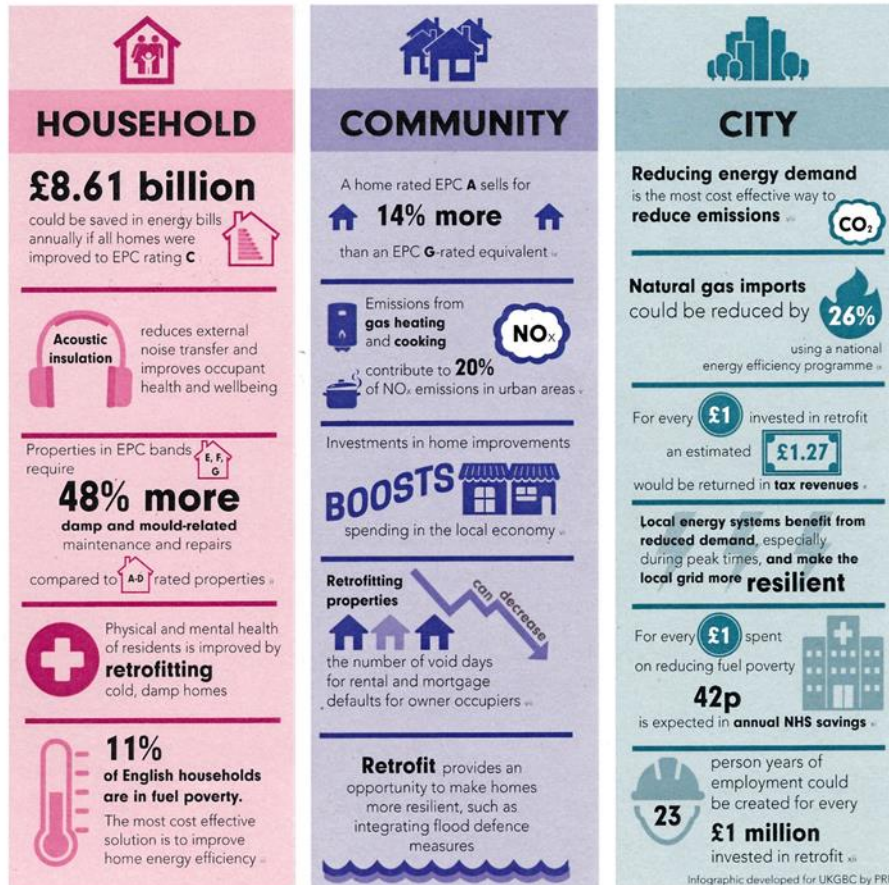
the challenge.....

This is an unprecedented increase in the pace of retrofit and therefore a significant increase of demand for a construction industry which is currently, and for the foreseeable future, facing challenges in terms of its capacity.



White Paper reported to
Government October 2017

and the benefits?



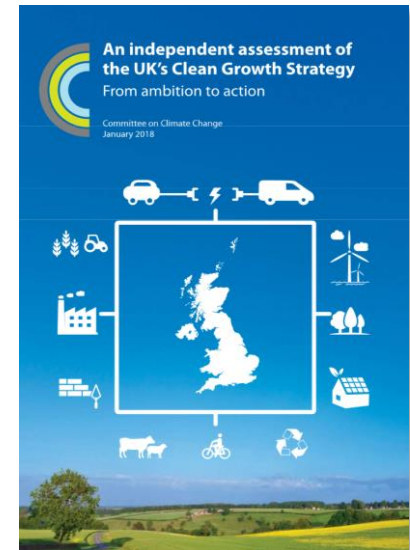
UK Green Building Council 2017

meeting the challenge

The Committee on Climate Change recent report refers to Building Energy Efficiency as an essential element in the pathway to 2050

‘ The overarching trajectory..... is promising. Details need to be set out on how this will be delivered. ‘

The challenge is therefore to reconsider traditional delivery models to offer a scaled up retrofit programme which is efficient, effective and affordable.



Report by the Committee on Climate Change. January 2018